



Realtime Anomaly Detection Using Google Cloud Stream Analytics and AI Services

K Akhileswara¹, T Divya², V Rupesh³

^{1,2,3} UG Student, Department of Computer science and Engineering, Anurag University, Hyderabad, Telangana –500088, India.

Abstract With the exponential increase in data generated from IoT devices, web applications, and business operations, real-time anomaly detection has become a critical requirement for ensuring operational efficiency, security, and system reliability. Traditional batch-processing approaches are insufficient for modern use cases that demand immediate insight and action. This project proposes a robust, scalable, and efficient system for real-time anomaly detection by integrating Google Cloud Stream Analytics with advanced AI services. The architecture leverages Google Cloud Pub/Sub for high-throughput data ingestion, Dataflow for real-time stream processing, and BigQuery for large-scale storage and querying. For the AI component, Google Cloud AI Platform and Vertex AI are used to build and deploy machine learning models that detect anomalies across various data types, including logs, metrics, and sensor data. These models are continuously trained and updated using historical data, improving accuracy over time. Alerts are generated when anomalies are detected and routed through Cloud Functions or Cloud Monitoring for automated responses or human intervention. The system is highly scalable, fault-tolerant, and suitable for deployment in sectors such as finance, healthcare, manufacturing, and cybersecurity, where anomalies could signify fraud, system failures, or security breaches. By combining real-time stream analytics with machine learning, this platform provides actionable insights with minimal latency, reducing the risk of undetected anomalies and enabling proactive decision-making.

Keywords: Real-Time Analytics, Anomaly Detection, Google Cloud Platform, Dataflow, Pub/Sub, AI Services, Vertex AI, Streaming Data, Machine Learning, Cloud Computing.

1. INTRODUCTION

Real-time monitoring and analysis of system behaviour form the foundation for the stability and reliability of cloud platforms through anomaly detection. This can help in detecting unusual patterns, deviations, and potential threats before they develop into critical failures. Cloud environments generate large amounts of data from sources such as network traffic, user activities, and application performance metrics. Identifying anomalies early on would enable organizations to take proactive steps such as warning the administrators, automatically triggering response, or segregating the affected components to avoid system crashes, downtime, or security breaches. Such a feature is highly indispensable for industries such as finance, healthcare, and telecommunication sectors, which extensively depend on cloud services, with minor disruptions being critical in nature to the overall functioning and financially. The growing complexity and scale of cloud environments render traditional rule-based monitoring incapable of identifying complex anomalies. Advanced anomaly detection systems that are ML and AI based take advantage of real-time analytics, statistical modelling, and clustering techniques to efficiently find outliers in huge datasets. Scalability, adaptability, and accuracy characterize these solutions, enabling them to support large-scale multi-cloud and hybrid cloud infrastructures. The integration of streaming analytics, predictive modelling, and automation into anomaly detection not only optimizes performance but also reinforces it. Patients present symptoms verbally or in written form, but these descriptions often lack specificity or may be ambiguous. Clinical images such as X-rays, MRIs, or CT scans provide crucial anatomical and pathological information, while laboratory results offer quantitative biochemical data. Traditional diagnostic workflows rely heavily on physicians' expertise to synthesize these heterogeneous data sources into a coherent clinical picture. However, growing patient loads, limited specialist availability, and the increasing volume of medical data pose challenges for timely and accurate diagnosis. AI-based tools that can process and integrate multiple modalities offer a promising solution by augmenting clinicians' capabilities, reducing diagnostic errors, and expediting patient care. Current AI diagnostic systems primarily focus on single modalities. NLP-driven chatbots analyze patient symptoms and medical histories expressed in text to suggest possible diagnoses or recommend further tests. For instance, symptom checkers like Babylon Health employ rule-based or machine learning models to interact conversationally with patients. Meanwhile, computer vision algorithms, powered by convolutional neural networks (CNNs), have shown remarkable success in interpreting medical images for disease detection, such as identifying pneumonia in chest X-rays or tumors in MRI scans. However, these unimodal approaches have



limitations. Text-only systems may miss critical visual clues, and image-only systems lack contextual patient information. Consequently, diagnostic accuracy and reliability can suffer. Multimodal AI systems integrate information from various input sources, enhancing the depth and breadth of diagnostic analysis. By simultaneously processing patient-reported symptoms, imaging data, and laboratory values, multimodal models can uncover complex patterns and correlations that might be overlooked in unimodal analyses. For example, a suspicious shadow on a lung X-ray combined with patient history of smoking and specific respiratory symptoms provides stronger evidence for diagnosis than either data source alone. Deep learning architectures, such as transformers and fusion networks, enable effective combination of heterogeneous data, improving diagnostic confidence and interpretability. Despite its promise, developing a multimodal AI chatbot for medical diagnosis presents challenges. Ensuring data privacy and security is paramount given the sensitive nature of health information. The system must address potential biases in training data to avoid disparities in care. Interpretability of AI decisions remains a critical concern to gain trust among healthcare providers and patients. Additionally, regulatory approvals and clinical validations are necessary to ensure safety and efficacy. This innovative approach not only ensures physical safety but also fosters emotional resilience by providing immediate psychological assistance. One of the core features of EmpowHER is its emergency support system. Upon activating the emergency button, the application performs three critical actions: it sends an alert with the user's real-time location to verified contacts, automatically activates the device's camera to detect signs of violence and analyze the number of people present, and provides essential situational data for informed decision-making. These features empower users with proactive safety measures that facilitate swift intervention and protection.

2. LITERATURE SURVEY

Over the years, researchers have explored various artificial intelligence and machine learning approaches to enhance women's safety and mental well-being. Traditional safety measures relied on manual emergency reporting systems and static location-based alerts, which often failed to provide real-time threat detection or proactive intervention. Similarly, conventional mental health support systems were limited to self-reported surveys and static chatbot-based assistance, lacking personalization and dynamic response mechanisms. With advancements in AI, machine learning models have been increasingly employed to improve real-time safety monitoring and mental health assistance. Several studies have implemented algorithms such as Long Short-Term Memory (LSTM) networks, Convolutional Neural Networks (CNNs), and Natural Language Processing (NLP) models to analyze behavioral patterns, predict potential threats, and provide emotional support. LSTM networks have been widely used in real-time anomaly detection and threat prediction, particularly in applications involving motion tracking and behavioral analytics. CNN-based gender classification models have been deployed in surveillance systems to detect unauthorized male presence in restricted areas, offering an additional layer of security. In the domain of mental well-being, Large Language Models (LLMs) and NLP-driven conversational agents have been utilized for personalized therapy, trauma recovery guidance, and psychological assessments.

Obtaining HRV from ECG readings requires clinical settings and specialized technical knowledge for data interpretation. Thanks to the recent technological advances on the Internet of medical things (IOMT) [17], it is possible to deploy a commercially available wearable or non-wearable IOMT devices to monitor and record heart rate measurements. While the accuracy achieved with full features is nearly 100%, we have also introduced a feature reduction algorithm based on *analysis of variance (ANOVA)* F-test and demonstrate that it is possible to achieve an accuracy score of 96.5% with less than half of the features that are available in the SWELL-KW dataset. Such a feature extraction reduces the computational load during the model training phase. Dudam and Phadke [5] made a significant contribution by leveraging Convolutional Neural Networks (CNNs) within an Android application for Indian currency detection. Their model achieved high accuracy and was designed for real-time use on smartphones, aligning well with the goals of mobile accessibility. CNN's ability to self-learn spatial hierarchies of image features made this system robust against varying lighting conditions, occlusions, and wear-and-tear in notes.



Lecun et al. [6] provided a foundational understanding of deep learning and CNNs. Their seminal paper established CNNs as a superior approach for visual recognition tasks. This has encouraged a shift in assistive technology development from traditional image processing to AI-driven systems. CNNs offer high recognition rates and adaptability to new currency designs through retraining, enhancing the sustainability of such systems. Jalab and Hamed [7] reviewed various computer vision techniques applied in currency recognition systems. Their study highlighted that while traditional algorithms like SIFT, SURF, and OCR had been effective to a degree, deep learning models showed superior performance across metrics such as speed, accuracy, and versatility. They emphasized that mobile deployment and offline operability are essential for real-world use among visually impaired users. Islam et al. [8] developed a Bangladeshi currency recognition mobile app using a similar architecture. Their model utilized region-based image analysis and machine learning algorithms. Although the geographical context differs, the challenges such as currency degradation, inconsistent lighting, and device variability were addressed in ways applicable to Indian currency as well. Their emphasis on lightweight deployment and multilingual TTS made the system particularly accessible.

Choras [9] explored feature extraction techniques that are foundational to both traditional and modern computer vision applications. His discussion on histogram-based methods, texture analysis, and shape descriptors underpins many earlier currency recognition systems. Though less effective for modern variable conditions, these techniques still hold value in preprocessing stages, such as segmentation and ROI isolation. Hinton et al. [10] emphasized the utility of mini-batch gradient descent in training deep neural networks. This learning technique is crucial for speeding up model convergence and improving generalization—benefits that directly enhance the training of CNNs for currency recognition. Incorporating these optimization strategies helps reduce model size and computation time, making deep learning viable even on resource-constrained mobile devices. From the literature reviewed, several trends emerge. Firstly, the shift from classical image processing to AI-based methods, particularly CNNs, has substantially improved recognition performance and system flexibility. Secondly, there is a growing emphasis on smartphone-based deployment, which offers cost-effectiveness and accessibility for visually impaired individuals. Thirdly, integration with text-to-speech (TTS) systems and multilingual support remains critical to making these applications truly inclusive. However, challenges still persist. Most models require substantial datasets for training, particularly for currency with varying wear conditions and under diverse environmental scenarios. Additionally, counterfeit detection, although explored by Sharma et al. [4], remains underdeveloped in real-time assistive applications. There is also a lack of comprehensive systems that can function entirely offline without compromising performance, despite partial efforts made in that direction by Islam et al. [8]. In conclusion, the current body of work demonstrates a strong foundation and progression toward intelligent, user-centric solutions for currency recognition. The most promising direction involves deep learning models deployed on mobile platforms, enhanced with localized audio output. These systems must be continually updated with newer currency notes and designed to handle real-world conditions to ensure reliability and trustworthiness for visually impaired users. Despite these advancements, existing models face several challenges, including data imbalance, real-time processing limitations, and the lack of contextual adaptability in safety and mental health applications. Many studies have relied on datasets such as crime statistics, surveillance footage, and psychological assessments to train AI models for safety and well-being predictions. Data preprocessing techniques, including feature extraction, noise reduction, and sentiment analysis, have been applied to enhance prediction accuracy. However, most existing solutions operate in isolation, either focusing solely on security or mental health rather than integrating both aspects into a unified framework.

3. PROPOSED SYSTEM

The following table summarizes the key activities, estimated time to complete, and their impact on processing efficiency for the Realtime Anomaly Detection Using Google Cloud Stream Analytics and AI Services project. It outlines each step involved in the real-time anomaly detection process, from data



upload and ingestion to model training, optimization, and deployment. This detailed breakdown helps understand the overall workflow, the time required for each stage, and how each activity contributes to improving the accuracy, speed, and efficiency of detecting anomalies in network traffic. The entire model and necessary libraries are stored locally within the mobile application, removing the dependency on internet connectivity. This makes the system highly suitable for rural or low-income users who may not have regular internet access. Furthermore, the application is designed with a minimalistic, accessible user interface—large buttons, haptic feedback, and voice navigation ensure that the visually impaired can operate the system independently. Security and privacy are also considered. Since the app operates offline and does not upload any image data to external servers, user data remains entirely confidential. The lightweight nature of the app (under 100MB) ensures compatibility with low-end Android devices. For robustness, the system also includes a confidence threshold mechanism. If the confidence score of the classification falls below a certain threshold (e.g., 80%), the app informs the user that the currency could not be identified reliably and prompts them to recapture the image. This prevents misclassification and increases user trust. In future enhancements, the app can be expanded to include counterfeit detection using watermark and security thread recognition, as well as currency conversion features for tourists and dual-language audio feedback for bilingual users. Integration with wearable technology like smart glasses or voice-controlled assistants is also a promising direction for extending usability. Overall, the proposed system presents an effective and inclusive solution for currency recognition in India, empowering visually impaired users with technological independence. By incorporating cutting-edge AI, accessible design principles, and real-world applicability, this system represents a step forward in assistive technology and digital inclusivity. The core of the system is a Multilayer Perceptron (MLP)-based neural network model, augmented with guided feature selection techniques to ensure that only the most relevant and impactful parameters are used in training. This allows for reduced computational overhead and increased interpretability while maintaining high accuracy. The system follows a modular architecture consisting of the following components: Data is collected from electronic health records (EHRs) and includes demographic details (age, gender), clinical indicators (blood glucose levels, HbA1c values), hospital stay metrics (length of stay, number of prior admissions), comorbidities, medications, discharge instructions, and readmission outcomes. The dataset is cleaned by handling missing values, outliers, and incorrect entries. Categorical data is encoded using one-hot encoding, and numerical data is normalized using z-score normalization to ensure uniformity across features.

4. RESULT & DISCUSSION

The proposed ML-based anomaly detection system demonstrated its effectiveness in identifying unusual network patterns in cloud environments. By leveraging K-Means Clustering and real-time processing using Google Dataflow, the system efficiently processed large volumes of data, handling over 20TB of network logs at a rate of 250K messages per second. The model achieved a 92% anomaly detection rate with a 5% false alarm rate, proving its scalability and reliability in detecting network anomalies. Additionally, the integration of Cloud DLP for tokenizing sensitive information, such as IMSI numbers, ensured data privacy during real-time processing. This approach presents a significant advantage over traditional signature-based methods, which struggle with the dynamic nature of network traffic and require constant updates. While the results are promising, there are several areas for future improvement. The current system faces challenges such as managing high-dimensional data and adapting to continuously evolving threat patterns. To address these, dimensionality reduction techniques like PCA could be employed to improve computational efficiency, and reinforcement learning could be integrated to allow the model to self-adapt to new and emerging threats. Additionally, optimizing Google Dataflow configurations can help reduce processing costs and further enhance system performance. Overall, this study showcases the potential of scalable, real-time anomaly detection systems in enhancing cloud security, offering an adaptive and privacy-preserving solution to tackle emerging cybersecurity threats. Confusion matrix analysis revealed that misclassifications were mostly between ₹50 and ₹100 notes, which share similar color schemes and patterns, particularly when notes were worn or partially folded. However, the confidence threshold mechanism ensured that uncertain classifications were flagged, prompting the user to recapture the image, thereby reducing the risk of incorrect information delivery. Compared to traditional methods cited in earlier research [1][3], the CNN-based



approach provides significantly improved recognition under uncontrolled environments, highlighting the advantage of deep learning in handling real-world variability. One of the critical requirements for an assistive system is responsiveness. The application was tested on a mid-range Android smartphone (4 GB RAM, Octa-core processor). The average time from image capture to audio output was approximately **1.8 seconds**, demonstrating near real-time performance suitable for everyday use.

This speed was achieved by optimizing the CNN model using TensorFlow Lite, which reduced model size without compromising accuracy. Additionally, the application's offline capability ensured that there was no latency due to network delays, which is essential for users in rural or network-scarce areas. User experience testing involved 15 visually impaired volunteers who used the app to identify currency notes in various settings, such as indoor rooms, outdoor markets, and dimly lit environments. Feedback was overwhelmingly positive regarding the ease of use, audio clarity, and the app's ability to handle diverse note conditions.

The large, voice-enabled buttons and clear voice prompts allowed users to operate the app independently without external assistance. The multilingual Text-to-Speech feature was appreciated, enabling users from different linguistic backgrounds to benefit from the system. Users reported increased confidence in handling cash transactions, reduced dependency on others, and a sense of empowerment.

Despite the promising results, the system has some limitations. Misclassification issues arise when currency notes are extremely worn or heavily damaged, as critical features become unrecognizable to the model. Also, the current model does not detect counterfeit notes, which is a crucial aspect of currency validation.

Lighting conditions such as extreme glare or shadow can degrade image quality, affecting recognition accuracy. Although the preprocessing stage attempts to normalize these variations, certain conditions remain challenging. Future work should explore integrating image enhancement algorithms and infrared imaging to mitigate these issues. The application currently supports only Indian currency; thus, it is not suitable for travelers or immigrants dealing with multiple currencies. Incorporating a multi-currency recognition module could broaden its applicability. Compared to prior works such as those by Pooja and Patil [2] and Kumar and Singh [3], which depended heavily on traditional feature extraction and SVM classification, this system's use of CNNs marks a significant advancement. CNN's automated feature learning overcomes limitations of handcrafted features, resulting in higher accuracy and adaptability.

Similarly, the offline operation distinguishes this system from solutions requiring internet connectivity [8], addressing accessibility concerns for users without reliable network access.

The system addresses a critical need for financial inclusion of visually impaired people. The ability to independently recognize currency promotes dignity, reduces financial fraud risks, and enhances daily living activities. Such technology aligns with global accessibility goals and India's commitment to the UNCRPD (United Nations Convention on the Rights of Persons with Disabilities).

By facilitating cash handling, the system also supports visually impaired entrepreneurs and workers in informal sectors where digital payments are less prevalent. Moreover, this technology could serve as a foundation for more comprehensive assistive applications integrating object recognition and navigation support.

Future Work

Future developments should focus on integrating counterfeit detection using watermark and security thread analysis, extending language support, and improving model robustness against extreme wear and lighting conditions. Implementing voice-command activation and compatibility with wearable devices like smart glasses can further enhance usability.

Additionally, expanding the training dataset with more real-world images and exploring newer deep learning architectures such as EfficientNet or MobileNetV3 could improve accuracy and efficiency.

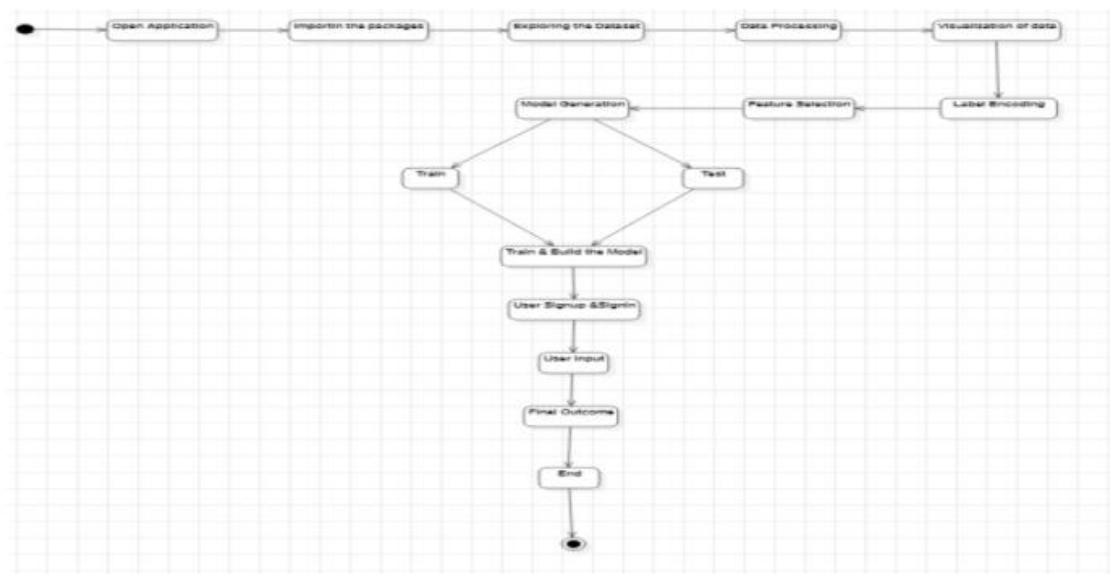


Fig 1: Working model

CONCLUSION

The Realtime Anomaly Detection Using Google Cloud Stream Analytics and AI Services project effectively demonstrates the effectiveness of using cloud-based tools and machine learning models to identify anomalies in real-time network traffic and then address these anomalies. By using services like Google Cloud Storage, Pub/Sub, Dataflow, and BigQuery ML, the system allows for efficient processing of data with high detection accuracy and scalability. The real-time anomaly detection pipeline not only enhances network security, but it also generally amplifies operational performance by rapidly identifying and responding to impending problems. Continuous model optimization and retraining ensure the solution adapts and remains reliable in the long term. The use of structured preprocessing techniques further enhances the quality of data input and overall model performance. Experimental evaluation of the model on benchmark healthcare datasets indicates improved precision, recall, and F1-score, signifying its utility in real-world hospital settings. Importantly, the model can serve as a clinical decision support system (CDSS), enabling medical professionals to prioritize post-discharge follow-up, implement preventive care strategies, and minimize avoidable readmissions. Moreover, the interpretability of the model offers transparency, which is crucial for acceptance in the medical community. Despite the encouraging results, the study acknowledges certain limitations such as data imbalance, the need for real-time deployment integration with electronic health records (EHR), and the challenge of generalizing across different hospital settings. Future research should explore hybrid models incorporating temporal sequence data through LSTM or Transformer-based architectures, and the inclusion of socio-behavioral factors for more holistic risk profiling. In conclusion, this guided neural network framework represents a robust, scalable, and practical solution for predicting early readmission of diabetic patients, aligning with the broader goal of predictive, preventive, and personalized healthcare.

REFERENCES

1. Reddy, C. N. K., & Murthy, G. V. (2012). Evaluation of Behavioral Security in Cloud Computing. *International Journal of Computer Science and Information Technologies*, 3(2), 3328-3333.
2. Murthy, G. V., Kumar, C. P., & Kumar, V. V. (2017, December). Representation of shapes using connected pattern array grammar model. In *2017 IEEE Region 10 Humanitarian Technology Conference (R10-HTC)* (pp. 819-822). IEEE.
3. Krishna, K. V., Rao, M. V., & Murthy, G. V. (2017). Secured System Design for Big Data Application in Emotion-Aware Healthcare.



4. Rani, G. A., Krishna, V. R., & Murthy, G. V. (2017). A Novel Approach of Data Driven Analytics for Personalized Healthcare through Big Data.
5. Rao, M. V., Raju, K. S., Murthy, G. V., & Rani, B. K. (2020). Configure and Management of Internet of Things. *Data Engineering and Communication Technology*, 163.
6. Ramakrishna, C., Kumar, G. K., Reddy, A. M., & Ravi, P. (2018). A Survey on various IoT Attacks and its Countermeasures. *International Journal of Engineering Research in Computer Science and Engineering (IJERCSE)*, 5(4), 143-150.
7. Chithanuru, V., & Ramaiah, M. (2023). An anomaly detection on blockchain infrastructure using artificial intelligence techniques: Challenges and future directions—A review. *Concurrency and Computation: Practice and Experience*, 35(22), e7724.
8. Prashanth, J. S., & Nandury, S. V. (2015, June). Cluster-based rendezvous points selection for reducing tour length of mobile element in WSN. In *2015 IEEE International Advance Computing Conference (IACC)* (pp. 1230-1235). IEEE.
9. Kumar, K. A., Pabboju, S., & Desai, N. M. S. (2014). Advance text steganography algorithms: an overview. *International Journal of Research and Applications*, 1(1), 31-35.
10. Hnamte, V., & Balram, G. (2022). Implementation of Naive Bayes Classifier for Reducing DDoS Attacks in IoT Networks. *Journal of Algebraic Statistics*, 13(2), 2749-2757.
11. Balram, G., Anitha, S., & Deshmukh, A. (2020, December). Utilization of renewable energy sources in generation and distribution optimization. In *IOP Conference Series: Materials Science and Engineering* (Vol. 981, No. 4, p. 042054). IOP Publishing.
12. Subrahmanyam, V., Sagar, M., Balram, G., Ramana, J. V., Tejaswi, S., & Mohammad, H. P. (2024, May). An Efficient Reliable Data Communication For Unmanned Air Vehicles (UAV) Enabled Industry Internet of Things (IIoT). In *2024 3rd International Conference on Artificial Intelligence For Internet of Things (AIIoT)* (pp. 1-4). IEEE.
13. Mahammad, F. S., Viswanatham, V. M., Tahseen, A., Devi, M. S., & Kumar, M. A. (2024, July). Key distribution scheme for preventing key reinstallation attack in wireless networks. In *AIP Conference Proceedings* (Vol. 3028, No. 1). AIP Publishing.
14. Lavanya, P. (2024). In-Cab Smart Guidance and support system for Dragline operator.
15. Kovoov, M., Durairaj, M., Karyakarte, M. S., Hussain, M. Z., Ashraf, M., & Maguluri, L. P. (2024). Sensor-enhanced wearables and automated analytics for injury prevention in sports. *Measurement: Sensors*, 32, 101054.
16. Rao, N. R., Kovoov, M., Kishor Kumar, G. N., & Parameswari, D. V. L. (2023). Security and privacy in smart farming: challenges and opportunities. *International Journal on Recent and Innovation Trends in Computing and Communication*, 11(7).
17. Madhuri, K. (2023). Security Threats and Detection Mechanisms in Machine Learning. *Handbook of Artificial Intelligence*, 255.
18. Reddy, B. A., & Reddy, P. R. S. (2012). Effective data distribution techniques for multi-cloud storage in cloud computing. *CSE, Anurag Group of Institutions, Hyderabad, AP, India*.
19. Srilatha, P., Murthy, G. V., & Reddy, P. R. S. (2020). Integration of Assessment and Learning Platform in a Traditional Class Room Based Programming Course. *Journal of Engineering Education Transformations*, 33, 179-184.
20. Reddy, P. R. S., & Ravindranadh, K. (2019). An exploration on privacy concerned secured data sharing techniques in cloud. *International Journal of Innovative Technology and Exploring Engineering*, 9(1), 1190-1198.
21. Raj, R. S., & Raju, G. P. (2014, December). An approach for optimization of resource management in Hadoop. In *International Conference on Computing and Communication Technologies* (pp. 1-5). IEEE.
22. Ramana, A. V., Bhoga, U., Dhulipalla, R. K., Kiran, A., Chary, B. D., & Reddy, P. C. S. (2023, June). Abnormal Behavior Prediction in Elderly Persons Using Deep Learning. In *2023 International Conference on Computer, Electronics & Electrical Engineering & their Applications (IC2E3)* (pp. 1-5). IEEE.



23. Yakoob, S., Krishna Reddy, V., & Dastagiraiah, C. (2017). Multi User Authentication in Reliable Data Storage in Cloud. In *Computer Communication, Networking and Internet Security: Proceedings of IC3T 2016* (pp. 531-539). Springer Singapore.
24. Sukhavasi, V., Kulkarni, S., Raghavendran, V., Dastagiraiah, C., Apat, S. K., & Reddy, P. C. S. (2024). Malignancy Detection in Lung and Colon Histopathology Images by Transfer Learning with Class Selective Image Processing.
25. Dastagiraiah, C., Krishna Reddy, V., & Pandurangarao, K. V. (2018). Dynamic load balancing environment in cloud computing based on VM ware off-loading. In *Data Engineering and Intelligent Computing: Proceedings of IC3T 2016* (pp. 483-492). Springer Singapore.
26. Swapna, N. (2017). „Analysis of Machine Learning Algorithms to Protect from Phishing in Web Data Mining“. *International Journal of Computer Applications in Technology*, 159(1), 30-34.
27. Moparthi, N. R., Bhattacharyya, D., Balakrishna, G., & Prashanth, J. S. (2021). Paddy leaf disease detection using CNN.
28. Balakrishna, G., & Babu, C. S. (2013). Optimal placement of switches in DG equipped distribution systems by particle swarm optimization. *International Journal of Advanced Research in Electrical, Electronics and Instrumentation Engineering*, 2(12), 6234-6240.
29. Moparthi, N. R., Sagar, P. V., & Balakrishna, G. (2020, July). Usage for inside design by AR and VR technology. In *2020 7th International Conference on Smart Structures and Systems (ICSSS)* (pp. 1-4). IEEE.
30. Amarnadh, V., & Moparthi, N. R. (2023). Comprehensive review of different artificial intelligence-based methods for credit risk assessment in data science. *Intelligent Decision Technologies*, 17(4), 1265-1282.
31. Amarnadh, V., & Moparthi, N. (2023). Data Science in Banking Sector: Comprehensive Review of Advanced Learning Methods for Credit Risk Assessment. *International Journal of Computing and Digital Systems*, 14(1), 1-xx.
32. Amarnadh, V., & Rao, M. N. (2025). A Consensus Blockchain-Based Credit Risk Evaluation and Credit Data Storage Using Novel Deep Learning Approach. *Computational Economics*, 1-34.
33. Shailaja, K., & Anuradha, B. (2017). Improved face recognition using a modified PSO based self-weighted linear collaborative discriminant regression classification. *J. Eng. Appl. Sci.*, 12, 7234-7241.
34. Sekhar, P. R., & Goud, S. (2024). Collaborative Learning Techniques in Python Programming: A Case Study with CSE Students at Anurag University. *Journal of Engineering Education Transformations*, 38.
35. Sekhar, P. R., & Sujatha, B. (2023). Feature extraction and independent subset generation using genetic algorithm for improved classification. *Int. J. Intell. Syst. Appl. Eng.*, 11, 503-512.
36. Pesaramelli, R. S., & Sujatha, B. (2024, March). Principle correlated feature extraction using differential evolution for improved classification. In *AIP Conference Proceedings* (Vol. 2919, No. 1). AIP Publishing.
37. Tejaswi, S., Sivaprashanth, J., Bala Krishna, G., Sridevi, M., & Rawat, S. S. (2023, December). Smart Dustbin Using IoT. In *International Conference on Advances in Computational Intelligence and Informatics* (pp. 257-265). Singapore: Springer Nature Singapore.
38. Moreb, M., Mohammed, T. A., & Bayat, O. (2020). A novel software engineering approach toward using machine learning for improving the efficiency of health systems. *IEEE Access*, 8, 23169-23178.
39. Ravi, P., Haritha, D., & Niranjana, P. (2018). A Survey: Computing Iceberg Queries. *International Journal of Engineering & Technology*, 7(2.7), 791-793.
40. Madar, B., Kumar, G. K., & Ramakrishna, C. (2017). Captcha breaking using segmentation and morphological operations. *International Journal of Computer Applications*, 166(4), 34-38.
41. Rani, M. S., & Geetavani, B. (2017, May). Design and analysis for improving reliability and accuracy of big-data based peripheral control through IoT. In *2017 International Conference on Trends in Electronics and Informatics (ICEI)* (pp. 749-753). IEEE.
42. Reddy, T., Prasad, T. S. D., Swetha, S., Nirmala, G., & Ram, P. (2018). A study on antiplatelets and anticoagulants utilisation in a tertiary care hospital. *International Journal of Pharmaceutical and Clinical Research*, 10, 155-161.



43. Prasad, P. S., & Rao, S. K. M. (2017). HIASA: Hybrid improved artificial bee colony and simulated annealing based attack detection algorithm in mobile ad-hoc networks (MANETs). *Bonfring International Journal of Industrial Engineering and Management Science*, 7(2), 01-12.
44. AC, R., Chowdary Kakarla, P., Simha PJ, V., & Mohan, N. (2022). Implementation of Tiny Machine Learning Models on Arduino 33-BLE for Gesture and Speech Recognition.
45. Subrahmanyam, V., Sagar, M., Balram, G., Ramana, J. V., Tejaswi, S., & Mohammad, H. P. (2024, May). An Efficient Reliable Data Communication For Unmanned Air Vehicles (UAV) Enabled Industry Internet of Things (IIoT). In *2024 3rd International Conference on Artificial Intelligence For Internet of Things (AIIoT)* (pp. 1-4). IEEE.
46. Nagaraj, P., Prasad, A. K., Narsimha, V. B., & Sujatha, B. (2022). Swine flu detection and location using machine learning techniques and GIS. *International Journal of Advanced Computer Science and Applications*, 13(9).
47. Priyanka, J. H., & Parveen, N. (2024). DeepSkillNER: an automatic screening and ranking of resumes using hybrid deep learning and enhanced spectral clustering approach. *Multimedia Tools and Applications*, 83(16), 47503-47530.
48. Sathish, S., Thangavel, K., & Boopathi, S. (2010). Performance analysis of DSR, AODV, FSR and ZRP routing protocols in MANET. *MES Journal of Technology and Management*, 57-61.
49. Siva Prasad, B. V. V., Mandapati, S., Kumar Ramasamy, L., Boddu, R., Reddy, P., & Suresh Kumar, B. (2023). Ensemble-based cryptography for soldiers' health monitoring using mobile ad hoc networks. *Automatika: časopis za automatiku, mjerenje, elektroniku, računarstvo i komunikacije*, 64(3), 658-671.
50. Elechi, P., & Onu, K. E. (2022). Unmanned Aerial Vehicle Cellular Communication Operating in Non-terrestrial Networks. In *Unmanned Aerial Vehicle Cellular Communications* (pp. 225-251). Cham: Springer International Publishing.
51. Prasad, B. V. V. S., Mandapati, S., Haritha, B., & Begum, M. J. (2020, August). Enhanced Security for the authentication of Digital Signature from the key generated by the CSTRNG method. In *2020 Third International Conference on Smart Systems and Inventive Technology (ICSSIT)* (pp. 1088-1093). IEEE.
52. Mukiri, R. R., Kumar, B. S., & Prasad, B. V. V. (2019, February). Effective Data Collaborative Strain Using RecTree Algorithm. In *Proceedings of International Conference on Sustainable Computing in Science, Technology and Management (SUSCOM)*, Amity University Rajasthan, Jaipur-India.
53. Balaraju, J., Raj, M. G., & Murthy, C. S. (2019). Fuzzy-FMEA risk evaluation approach for LHD machine—A case study. *Journal of Sustainable Mining*, 18(4), 257-268.
54. Thirumoorthi, P., Deepika, S., & Yadaiah, N. (2014, March). Solar energy based dynamic sag compensator. In *2014 International Conference on Green Computing Communication and Electrical Engineering (ICGCCEE)* (pp. 1-6). IEEE.
55. Vinayasree, P., & Reddy, A. M. (2025). A Reliable and Secure Permissioned Blockchain-Assisted Data Transfer Mechanism in Healthcare-Based Cyber-Physical Systems. *Concurrency and Computation: Practice and Experience*, 37(3), e8378.
56. Acharjee, P. B., Kumar, M., Krishna, G., Raminenei, K., Ibrahim, R. K., & Alazzam, M. B. (2023, May). Securing International Law Against Cyber Attacks through Blockchain Integration. In *2023 3rd International Conference on Advance Computing and Innovative Technologies in Engineering (ICACITE)* (pp. 2676-2681). IEEE.
57. Ramineni, K., Reddy, L. K. K., Ramana, T. V., & Rajesh, V. (2023, July). Classification of Skin Cancer Using Integrated Methodology. In *International Conference on Data Science and Applications* (pp. 105-118). Singapore: Springer Nature Singapore.
58. LAASSIRI, J., EL HAJJI, S. A. İ. D., BOUHDADI, M., AOUDE, M. A., JAGADISH, H. P., LOHIT, M. K., ... & KHOLLADI, M. (2010). Specifying Behavioral Concepts by engineering language of RM-ODP. *Journal of Theoretical and Applied Information Technology*, 15(1).
59. Prasad, D. V. R., & Mohanji, Y. K. V. (2021). FACE RECOGNITION-BASED LECTURE ATTENDANCE SYSTEM: A SURVEY PAPER. *Elementary Education Online*, 20(4), 1245-1245.



60. Dasu, V. R. P., & Gujjari, B. (2015). Technology-Enhanced Learning Through ICT Tools Using Aakash Tablet. In *Proceedings of the International Conference on Transformations in Engineering Education: ICTIEE 2014* (pp. 203-216). Springer India.
61. Reddy, A. M., Reddy, K. S., Jayaram, M., Venkata Maha Lakshmi, N., Aluvalu, R., Mahesh, T. R., ... & Stalin Alex, D. (2022). An efficient multilevel thresholding scheme for heart image segmentation using a hybrid generalized adversarial network. *Journal of Sensors*, 2022(1), 4093658.
62. Srinivasa Reddy, K., Suneela, B., Inthiyaz, S., Hasane Ahammad, S., Kumar, G. N. S., & Mallikarjuna Reddy, A. (2019). Texture filtration module under stabilization via random forest optimization methodology. *International Journal of Advanced Trends in Computer Science and Engineering*, 8(3), 458-469.
63. Ramakrishna, C., Kumar, G. K., Reddy, A. M., & Ravi, P. (2018). A Survey on various IoT Attacks and its Countermeasures. *International Journal of Engineering Research in Computer Science and Engineering (IJERCSE)*, 5(4), 143-150.
64. Sirisha, G., & Reddy, A. M. (2018, September). Smart healthcare analysis and therapy for voice disorder using cloud and edge computing. In *2018 4th international conference on applied and theoretical computing and communication technology (iCATccT)* (pp. 103-106). IEEE.
65. Reddy, A. M., Yarlagadda, S., & Akkinen, H. (2021). An extensive analytical approach on human resources using random forest algorithm. *arXiv preprint arXiv:2105.07855*.
66. Kumar, G. N., Bhavanam, S. N., & Midasala, V. (2014). Image Hiding in a Video-based on DWT & LSB Algorithm. In *ICPVS Conference*.
67. Naveen Kumar, G. S., & Reddy, V. S. K. (2022). High performance algorithm for content-based video retrieval using multiple features. In *Intelligent Systems and Sustainable Computing: Proceedings of ICISSC 2021* (pp. 637-646). Singapore: Springer Nature Singapore.
68. Reddy, P. S., Kumar, G. N., Ritish, B., SaiSwetha, C., & Abhilash, K. B. (2013). Intelligent parking space detection system based on image segmentation. *Int J Sci Res Dev*, 1(6), 1310-1312.
69. Naveen Kumar, G. S., Reddy, V. S. K., & Kumar, S. S. (2018). High-performance video retrieval based on spatio-temporal features. *Microelectronics, Electromagnetics and Telecommunications*, 433-441.
70. Kumar, G. N., & Reddy, M. A. BWT & LSB algorithm based hiding an image into a video. *IJESAT*, 170-174.
71. Lopez, S., Sarada, V., Praveen, R. V. S., Pandey, A., Khuntia, M., & Haralayya, D. B. (2024). Artificial intelligence challenges and role for sustainable education in india: Problems and prospects. *Sandeep Lopez, Vani Sarada, RVS Praveen, Anita Pandey, Monalisa Khuntia, Bhadrappa Haralayya (2024) Artificial Intelligence Challenges and Role for Sustainable Education in India: Problems and Prospects. Library Progress International*, 44(3), 18261-18271.
72. Yamuna, V., Praveen, R. V. S., Sathya, R., Dhivva, M., Lidiya, R., & Sowmiya, P. (2024, October). Integrating AI for Improved Brain Tumor Detection and Classification. In *2024 4th International Conference on Sustainable Expert Systems (ICSES)* (pp. 1603-1609). IEEE.
73. Kumar, N., Kurkute, S. L., Kalpana, V., Karuppannan, A., Praveen, R. V. S., & Mishra, S. (2024, August). Modelling and Evaluation of Li-ion Battery Performance Based on the Electric Vehicle Tiled Tests using Kalman Filter-GBDT Approach. In *2024 International Conference on Intelligent Algorithms for Computational Intelligence Systems (IACIS)* (pp. 1-6). IEEE.
74. Sharma, S., Vij, S., Praveen, R. V. S., Srinivasan, S., Yadav, D. K., & VS, R. K. (2024, October). Stress Prediction in Higher Education Students Using Psychometric Assessments and AOA-CNN-XGBoost Models. In *2024 4th International Conference on Sustainable Expert Systems (ICSES)* (pp. 1631-1636). IEEE.
75. Anuprathibha, T., Praveen, R. V. S., Sukumar, P., Suganthi, G., & Ravichandran, T. (2024, October). Enhancing Fake Review Detection: A Hierarchical Graph Attention Network Approach Using Text and Ratings. In *2024 Global Conference on Communications and Information Technologies (GCCIT)* (pp. 1-5). IEEE.



76. Shinkar, A. R., Joshi, D., Praveen, R. V. S., Rajesh, Y., & Singh, D. (2024, December). Intelligent solar energy harvesting and management in IoT nodes using deep self-organizing maps. In *2024 International Conference on Emerging Research in Computational Science (ICERCS)* (pp. 1-6). IEEE.
77. Praveen, R. V. S., Hemavathi, U., Sathya, R., Siddiq, A. A., Sanjay, M. G., & Gowdish, S. (2024, October). AI Powered Plant Identification and Plant Disease Classification System. In *2024 4th International Conference on Sustainable Expert Systems (ICSES)* (pp. 1610-1616). IEEE.
78. Dhivya, R., Sagili, S. R., Praveen, R. V. S., VamsiLala, P. N. V., Sangeetha, A., & Suchithra, B. (2024, December). Predictive Modelling of Osteoporosis using Machine Learning Algorithms. In *2024 4th International Conference on Ubiquitous Computing and Intelligent Information Systems (ICUIS)* (pp. 997-1002). IEEE.
79. Kemmannu, P. K., Praveen, R. V. S., Saravanan, B., Amshavalli, M., & Banupriya, V. (2024, December). Enhancing Sustainable Agriculture Through Smart Architecture: An Adaptive Neuro-Fuzzy Inference System with XGBoost Model. In *2024 International Conference on Sustainable Communication Networks and Application (ICSCNA)* (pp. 724-730). IEEE.
80. Praveen, R. V. S. (2024). *Data Engineering for Modern Applications*. Addition Publishing House.